



Watersystems WS MEGA™ Koalescensudskillere

Udskiller efter DS EN 858 og DIN 1999-100

Beholderen er en monolit i armeret beton efter DIN 4281

PRISLISTE 2018



CE mærke efter EU 305/2011									
Artikel NG/Slamfang volumen/ Olievolumen	Bruttopris	PE-HD-INLINER Bruttopris	DN mm	Diameter cm	Højde cm	Zmin	Zauf	Tungeste enkedel	Totalvægt tons
NG 3/650/523	29.167,00	8.436,00	150	144	134	65	102	2	3
NG 3/1000/523	30.195,00	9.352,00	150	144	164	65	102	3	3
NG 4/800-1200/656	32.127,00	10.384,00	150	174	134	68	106	3	5
NG 6/600-1200/656	32.127,00	10.384,00	150	174	134	68	106	3	5
NG 6/1600/656	33.268,00	10.991,00	150	174	159	68	106	4	5
NG 8 800/656	32.127,00	10.384,00	150	174	134	68	106	3	5
NG 8/1600/656	33.268,00	10.991,00	150	174	159	68	106	4	5
NG 10/1000/656	32.127,00	10.384,00	150	174	134	68	106	3	5
NG 3-4/2500/656	34.048,00	12.662,00	150	174	199	68	106	4	5
NG 5-6/2500/656	34.307,00	12.662,00	150	174	199	68	106	4	5
NG 7-8/2500/656	34.567,00	12.662,00	150	174	199	68	106	4	5
NG 9-10/2500/656	34.827,00	12.662,00	150	174	199	68	106	4	5
NG 3-4/2500/885	37.318,00	14.066,00	150	224	127	68	106	4	6
NG 5-6/2500/885	37.578,00	14.066,00	150	224	127	68	106	4	6
NG 7-8/2500/885	37.838,00	14.066,00	150	224	127	68	106	4	6
NG 9-10/2500/885	38.098,00	14.066,00	150	224	127	68	106	4	6
NG 3-4/3000/885	38.429,00	15.418,00	150	224	187	68	106	5	7
NG 5-6/3000/885	38.689,00	15.418,00	150	224	187	68	106	5	7
NG 7-8/3000/885	38.949,00	15.418,00	150	224	187	68	106	5	7
NG 9-10/3000/885	39.209,00	15.418,00	150	224	187	68	106	5	7
NG 3-4/5000/885	42.354,00	16.461,00	150	224	207	68	106	6	8
NG 5-6/5000/885	42.613,00	16.461,00	150	224	207	68	106	6	8
NG 7-8/5000/885	42.873,00	16.461,00	150	224	207	68	106	6	8
NG 9-10/5000/885	43.133,00	16.461,00	150	224	207	68	106	6	8
NG 15/3000/875	44.784,00	15.418,00	200	224	182	73	106	5	7
NG 15-20/2500/875	44.296,00	14.066,00	200	224	122	73	106	4	6
NG 15-20/5000/875	47.296,00	16.461,00	200	224	202	73	106	6	8
NG 20/4000/875	46.944,00	15.418,00	200	224	182	73	106	5	7
NG 30/3000/1100 *)	75.144,00	21.399,00	250	280	174	85	106	8	13
NG 30/6000/1100 *)	77.252,00	23.390,00	250	280	227	85	106	10	14
NG 30/9000/1100 *)	84.468,00	28.583,00	250	280	277	85	106	11	15



NG 40/4000/760 *)	92.610,00	26.167,00	300	280	222	90	117	10	14
NG 40/4000/3600 *)	97.229,00	24.252,00	300	280	172	90	117	9	13
NG 40/8000/1770 *)	81.115,00	26.167,00	300	280	222	90	117	10	14
NG 50/5000/1920 *)	96.098,00	23.443,00	300	280	172	90	117	9	13
NG 50/10000/1800 *)	118.879,00	28.583,00	300	280	272	90	117	12	16
NG 60/6500/2750 *)	114.435,00	27.391,00	300	280	247	90	117	11	15

Priserne er ab lager, Aabenraa

Priser er Ab Lager, Aaberna

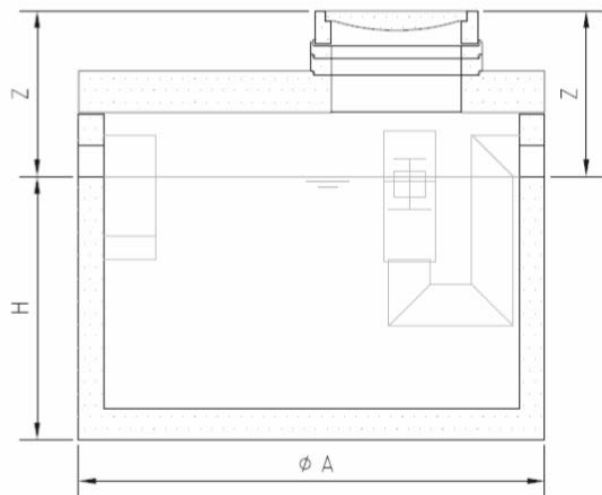
*) Enkelte dele kræver special transport

Forhøjelse af indløbsdybde pr. påbegyndt 25 cm:	787,00
Forhøjelse af indløbsdybde pr. påbegyndt 50 cm:	1.149,00
Forhøjelse af indløbsdybde pr. påbegyndt 100 cm:	2.099,00
Kabelgennemføring	2.112,22
Prøvetagningsskakt	6.905,00
Højvands- og olielagsalarm	7.476,00

Anlægget leveres med flad afdækning samt reduktion fra $\varnothing 100$ til $\varnothing 60$

Ved bestilling oplyses indløbsdybde. Alle priser er eksklusive moms

Rev.180924



Watersystems WS TRITON™ filterfri Koalescensudskillere

Klasse I udskiller efter DS EN 858 og DIN 1999-100

Beholderen er en monolit i armeret beton efter DIN 4281



PRISLISTE 2018

Artikel NG/Slamfang volumen/ Olievolumen	Bruttopris	SSR	PE-HD- INLINER Bruttopris	DN mm	Diameter cm A	Højde cm H	Zmin	Zauf	Tungeste enkedel	Totalvægt tons
NG 3/100/135	45.159,00	524	8.665,00	150	144	164	65	102	2,69	3,45
NG 4/100/135	45.425,00	524	8.665,00	150	144	164	65	102	2,69	3,45
NG 5/100/135	45.690,00	524	8.665,00	150	144	164	65	102	2,69	3,45
NG 6/100/135	45.956,00	524	8.665,00	150	144	164	65	102	2,69	3,45
NG 3/1500/135	47.670,00	751	9.754,00	150	144	184	65	102	3,59	4,38
NG 4/1500/135	47.936,00	751	9.754,00	150	144	184	65	102	3,59	4,38
NG 5/1500/135	48.203,00	751	9.754,00	150	144	184	65	102	3,59	4,38
NG 6/1500/135	48.469,00	751	9.754,00	150	144	184	65	102	3,59	4,38
NG 3/2000/224	49.916,00	996	10.956,00	150	174	134	69	106	3,22	4,70
NG 4/2000/224	50.181,00	996	10.956,00	150	174	134	69	106	3,22	4,70
NG 5/2000/224	50.448,00	996	10.956,00	150	174	134	69	106	3,22	4,70
NG 6/2000/224	50.714,00	996	10.956,00	150	174	134	69	106	3,22	4,70
NG 3/2900/224	51.214,00	1.440	11.669,00	150	174	159	69	106	3,28	4,76
NG 4/2900/224	51.480,00	1.440	11.669,00	150	174	159	69	106	3,28	4,76
NG 5/2900/224	51.746,00	1.440	11.669,00	150	174	159	69	106	3,28	4,76
NG 6/2900/224	52.013,00	1.440	11.669,00	150	174	159	69	106	3,28	4,76
NG 3/5200/224	56.961,00	2.588	16.715,00	150	174	224	69	106	5,28	7,24
NG 4/5200/224	57.228,00	2.588	16.715,00	150	174	224	69	106	5,28	7,24
NG 5/5200/224	57.494,00	2.588	16.715,00	150	174	224	69	106	5,28	7,24
NG 6/5200/224	57.760,00	2.588	16.715,00	150	174	224	69	106	5,28	7,24
NG 3/1170/907 **)	51.023,00	584	11.669,00	150	174	159	69	106	3,28	4,76
NG 4/1170/907 **)	51.289,00	584	11.669,00	150	174	159	69	106	3,28	4,76
NG 5/1170/907 **)	51.555,00	584	11.669,00	150	174	159	69	106	3,28	4,76
NG 6/1170/907 **)	51.821,00	584	11.669,00	150	174	159	69	106	3,28	4,76
NG 3/2580/907 **)	51.736,00	1.291	13.748,00	150	174	199	69	106	3,99	5,35
NG 4/2580/907 **)	52.001,00	1.291	13.748,00	150	174	199	69	106	3,99	5,35
NG 5/2580/907 **)	52.268,00	1.291	13.748,00	150	174	199	69	106	3,99	5,35
NG 6/2580/907 **)	52.534,00	1.291	13.748,00	150	174	199	69	106	3,99	5,35
NG 3/3465/907 *) **)	57.706,00	1.733	16.715,00	150	174	224	69	106	5,28	7,24
NG 4/3465/907 *) **)	57.973,00	1.733	16.715,00	150	174	224	69	106	5,28	7,24
NG 5/3465/907 *) **)	58.239,00	1.733	16.715,00	150	174	224	69	106	5,28	7,24
NG 6/3465/907 *) **)	58.505,00	1.733	16.715,00	150	174	224	69	106	5,28	7,24
NG 3/4300/1096	52.598,00	2.171	15.288,00	150	224	127	69	106	4,66	6,75

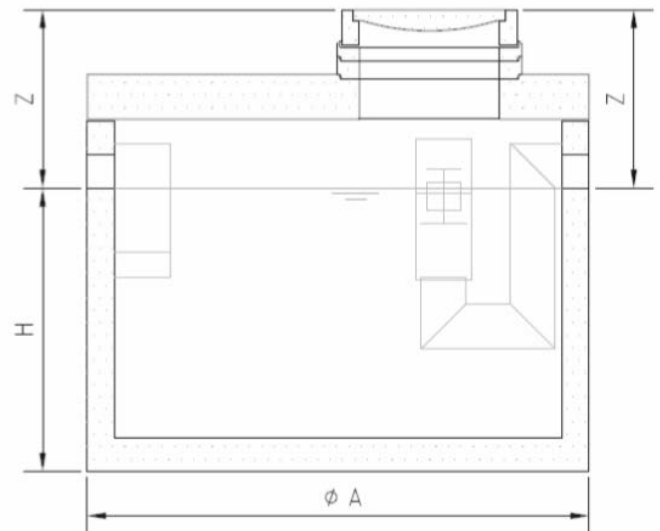
NG 4/4300/1096	52.864,00	2.171	15.288,00	150	224	127	69	106	4,66	6,75
NG 5/4300/1096	53.130,00	2.171	15.288,00	150	224	127	69	106	4,66	6,75
NG 6/4300/1096	53.396,00	2.171	15.288,00	150	224	127	69	106	4,66	6,75
NG 3/8100/1096	54.386,00	4.056	16.879,00	150	224	187	69	106	4,96	6,99
NG 4/8100/1096	54.651,00	4.056	16.879,00	150	224	187	69	106	4,96	6,99
NG 5/8100/1096	54.918,00	4.056	16.879,00	150	224	187	69	106	4,96	6,99
NG 6/8100/1096	55.184,00	4.056	16.879,00	150	224	187	69	106	4,96	6,99
NG 3/9300/1096	56.610,00	5.684	18.118,00	150	224	207	69	106	5,76	7,72
NG 4/9300/1096	56.876,00	5.684	18.118,00	150	224	207	69	106	5,76	7,72
NG 5/9300/1096	57.143,00	5.684	18.118,00	150	224	207	69	106	5,76	7,72
NG 6/9300/1096	57.409,00	5.684	18.118,00	150	224	207	69	106	5,76	7,72
NG 3/3300/1452 **)	53.161,00	1.650	15.288,00	150	224	127	69	106	4,66	6,75
NG 4/3300/1452 **)	53.428,00	1.650	15.288,00	150	224	127	69	106	4,66	6,75
NG 5/3300/1452 **)	53.694,00	1.650	15.288,00	150	224	127	69	106	4,66	6,75
NG 6/3300/1452 **)	53.960,00	1.650	15.288,00	150	224	127	69	106	4,66	6,75
NG 3/7070/1452 **)	57.100,00	3.535	16.879,00	150	224	187	69	106	5,14	7,23
NG 4/7070/1452 **)	57.366,00	3.535	16.879,00	150	224	187	69	106	5,14	7,23
NG 5/7070/1452 **)	57.631,00	3.535	16.879,00	150	224	187	69	106	5,14	7,23
NG 6/7070/1452 **)	57.898,00	3.535	16.879,00	150	224	187	69	106	5,14	7,23
NG 3/3300/1452 **)	58.228,00	4.163	18.118,00	150	224	207	69	106	5,65	7,74
NG 4/3300/1452 **)	58.494,00	4.163	18.118,00	150	224	207	69	106	5,65	7,74
NG 5/3300/1452 **)	58.760,00	4.163	18.118,00	150	224	207	69	106	5,65	7,74
NG 6/3300/1452 **)	59.026,00	4.163	18.118,00	150	224	207	69	106	5,65	7,74
NG 3-4/4200/823	55.983,00	2.109	16.879,00	150	224	187	69	106	5,14	7,23
NG 5-6/4200/823	56.249,00	2.109	16.879,00	150	224	187	69	106	5,14	7,23
NG 7-8/4200/823	56.514,00	2.109	16.879,00	150	224	187	69	106	5,14	7,23
NG 9-10/4200/823	56.780,00	2.109	16.879,00	150	224	187	69	106	5,14	7,23
NG 3-4/5500/823	57.675,00	2.737	18.118,00	150	224	207	69	106	5,65	7,74
NG 5-6/5500/823	57.940,00	2.737	18.118,00	150	224	207	69	106	5,65	7,74
NG 7-8/5500/823	58.206,00	2.737	18.118,00	150	224	207	69	106	5,65	7,74
NG 9-10/5500/823	58.473,00	2.737	18.118,00	150	224	207	69	106	5,65	7,74
NG 3-4/8000/823	60.719,00	3.994	18.845,00	150	224	247	69	106	6,71	7,77
NG 5-6/8000/823	60.984,00	3.994	18.845,00	150	224	247	69	106	6,71	7,77
NG 7-8/8000/823	61.250,00	3.994	18.845,00	150	224	247	69	106	6,71	7,77
NG 9-10/8000/823	61.516,00	3.994	18.845,00	150	224	247	69	106	6,71	7,77
NG 3-4/4110/1433 **)	57.185,00	2.052	16.879,00	150	224	187	69	106	5,14	7,23
NG 5-6/4110/1433 **)	57.451,00	2.052	16.879,00	150	224	187	69	106	5,14	7,23
NG 7-8/4110/1433 **)	57.718,00	2.052	16.879,00	150	224	187	69	106	5,14	7,23
NG 9-10/4110/1433 **)	57.983,00	2.052	16.879,00	150	224	187	69	106	5,14	7,23
NG 3-4/5370/1433 **)	58.409,00	2.686	18.118,00	150	224	207	69	106	5,65	7,74
NG 5-6/5370/1433 **)	58.675,00	2.686	18.118,00	150	224	207	69	106	5,65	7,74
NG 7-8/5370/1433 **)	58.941,00	2.686	18.118,00	150	224	207	69	106	5,65	7,74
NG 9-10/5370/1433 **)	59.208,00	2.686	18.118,00	150	224	207	69	106	5,65	7,74
NG 15/9000/1035 *)	97.224,00	4.428	21.974,00	200	280	0	80	117	8,69	12,61
NG 15/14000/1035 *)	101.235,00	6.882	23.076,00	200	280	232	80	117	9,45	13,19
NG 15/4000/2763 *)	97.224,00	2.005	21.974,00	200	280	182	80	117	8,69	12,61
NG 15/8900/2763 *)	100.140,00	4.459	23.076,00	200	280	232	80	117	9,45	13,19

NG 15/9900/2763 *)	102.321,00	4.950	24.767,00	200	280	242	80	117	10,18	14,09
NG 20/2500/1121 *)	95.510,00	1.447	21.974,00	200	280	182	80	117	8,69	12,61
NG 20/5000/1121 *)	96.223,00	2.429	21.974,00	200	280	182	80	117	8,69	12,61
NG 20/9570/1121 *)	101.235,00	4.785	23.076,00	200	280	232	80	117	9,45	13,19
NG 20/10555/1121 *)	102.321,00	5.276	24.767,00	200	280	242	80	117	10,18	14,09
NG 20/12000/1121 *)	102.779,00	6.111	26.332,00	200	280	257	80	117	11,06	14,98
NG 20/5300/2747 *)	101.235,00	2.650	23.076,00	200	280	232	80	117	9,45	13,19
NG 20/6280/2747 *)	102.321,00	3.140	24.767,00	200	280	242	80	117	10,18	14,09
NG 30/3200/542	101.715,00	1.614	22.513,00	250	280	177	85	122	8,92	12,93
NG 30/8100/542	103.758,00	4.068	24.479,00	250	280	227	85	122	9,52	14,51
NG 30/8650/542	104.716,00	4.324	24.767,00	250	280	237	85	122	10,18	14,09
NG 30/10600/542 *)	105.610,00	5.296	27.734,00	250	280	252	85	122	11,16	15,18
NG 30/4080/2778 *)	105.610,00	2.042	27.734,00	250	280	252	85	122	11,16	15,18
NG 30/6500/2778 *)	109.005,00	3.269	30.902,00	250	280	277	85	122	11,93	15,94

Priser er Ab Lager, Aaberna

*) Enkelte dele kræver special transport

Forhøjelse af indløbsdybde pr. påbegyndt 25 cm:	787,00
Forhøjelse af indløbsdybde pr. påbegyndt 50 cm:	1.149,00
Forhøjelse af indløbsdybde pr. påbegyndt 100 cm:	2.099,00
Kabelgennemføring	2.112,00
Prøvetagningsrakt	6.905,00
Højvands- og olielagsalarm	7.476,00



Anlægget leveres med flad afdækning samt reduktion fra Ø100 til Ø60

Ved bestilling oplyses indløbsdybde. Alle priser er eksklusive moms

Rev.180924